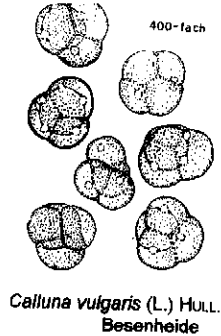
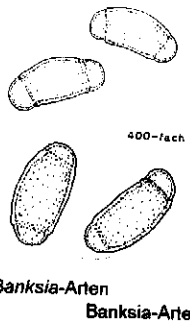


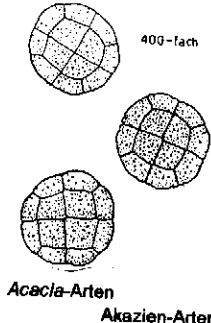
Pollenübersicht



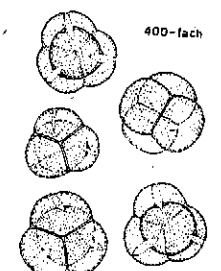
Calluna vulgaris (L.) HULL.
Besenheide



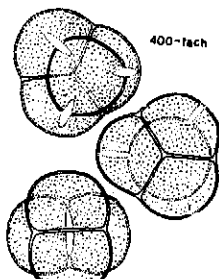
Banksia-Arten
Banksia-Arten



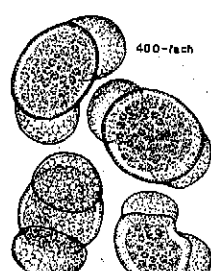
Acacia-Arten
Akazien-Arten



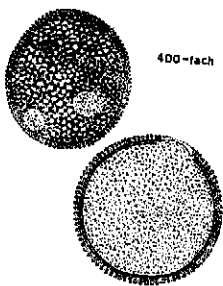
Erica tetralix L.
Glockenheide



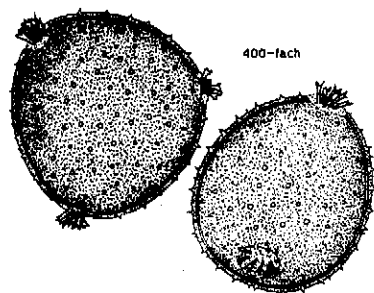
Rhododendron-Arten
Rhododendron-Arten



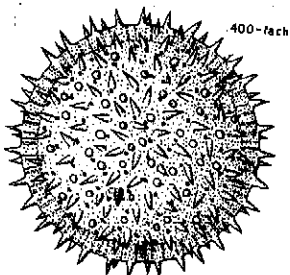
Pinus sylvestris L.
Wald-Kiefer



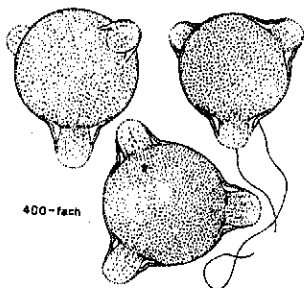
Geranium robertianum L.
Ruprechtskraut



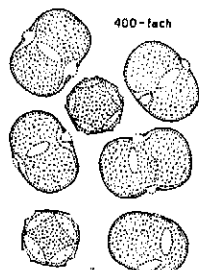
Knautia arvensis (L.) COULT.
Acker-Witwenblume



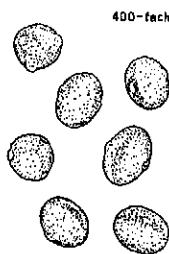
Althea rosea (L.) CAV.
Stockrose



Chamaenerion angustifolium (L.) Scop.
Schmalblättriges Weidenröschen

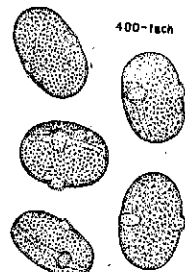


Anchusa officinalis L.
Gemeine Ochsenzunge

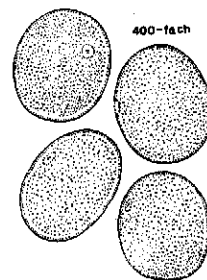


Myosotis-Arten
Vergissmeinnicht-Arten

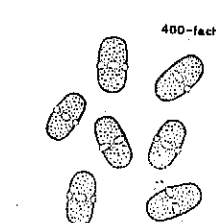
Melilotus officinalis (L.) LAM.
Echter Steinklee



Vicia faba L.
Acker-Bohne



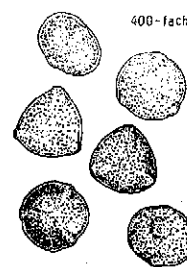
Secale cereale L.
Roggen



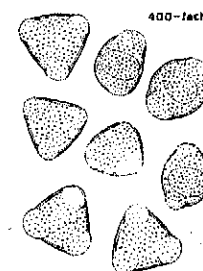
Anthriscus sylvestris HOFFM.
Wiesenerbel



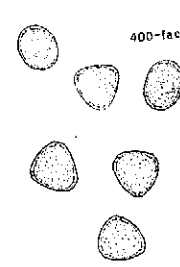
Malus sylvestris (L.) MIL.
Holzapfel



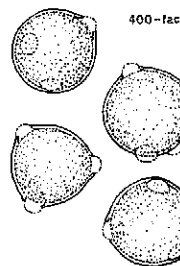
Acer platanoides L.
Spitzahorn



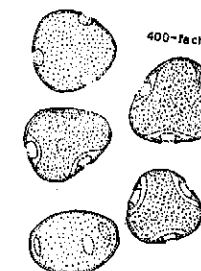
Phaseolus vulgaris L.
Garten-Bohne



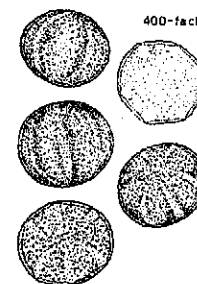
Eucalyptus globulus LABILL.
Gewöhnlicher Eukalyptus



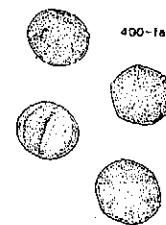
Robinia pseudacacia L.
Gewöhnliche Robinie/ Scheinakazie



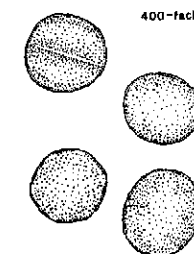
Tilia platyphyllos Scop.
Sommer-Linde



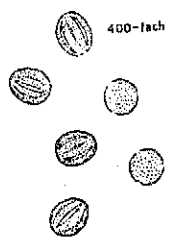
Salvia pratensis L.
Wiesen-Salbei



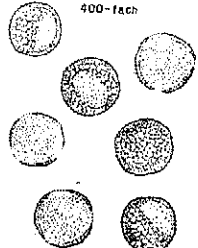
Origanum vulgare L.
Oregano



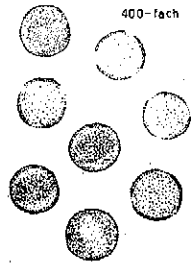
Melissa officinalis L.
Zitronmelisse



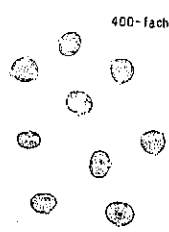
Salix caprea L.
Sal-Weide



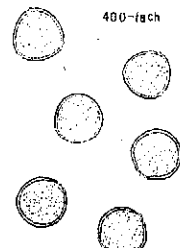
Cardamine pratensis L.
Wiesen-Schaumkraut



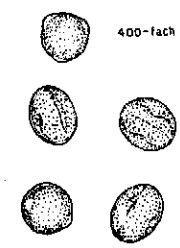
Brassica napus L.
Raps



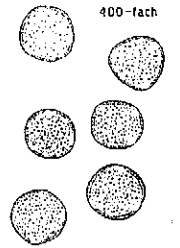
Castanea sativa MILL.
Edelkastanie



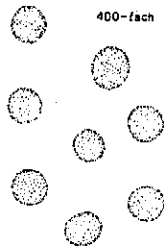
Trifolium repens L.
Weiß-Klee



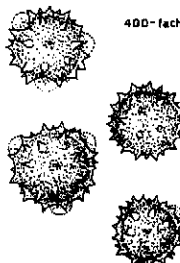
Rubus idaeus L.
Himbeere



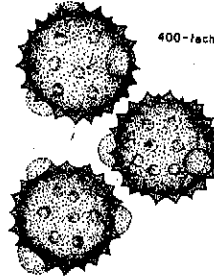
Ranunculus acris L.
Gichtkraut/Scharfer Hahnenfuß



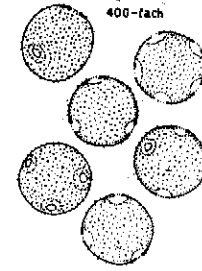
Phacelia tanacetifolia BENTH.
Rainfarn-Büschelschön



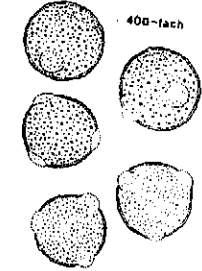
Cirsium arvense (L.) Scop.
Acker-Kratzdistel



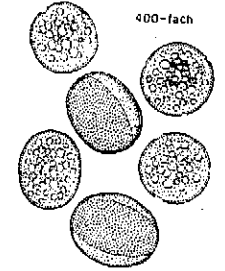
Cynara scolymus L.
Artischocke



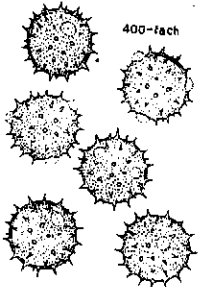
Campanula rotundifolia L.
Rundblättrige Glockenblume



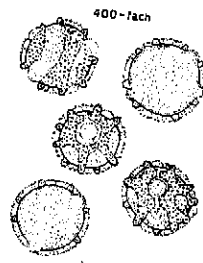
Centaurea jacea L.
Wiesen-Flockenblume



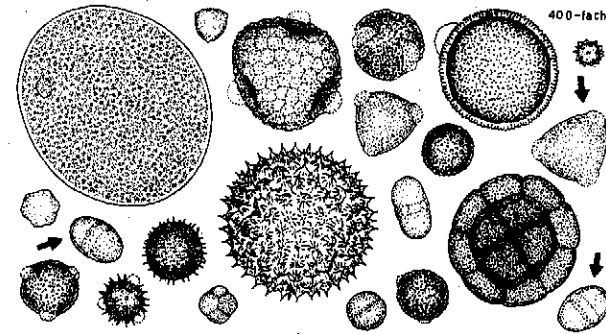
Fagopyrum esculentum MOENCH.
Echter Buchweizen



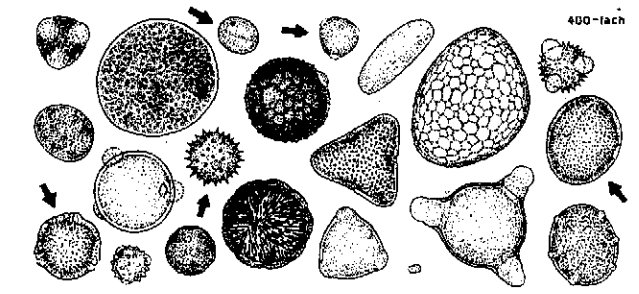
Helianthus annuus L.
Gewöhnliche Sonnenblume



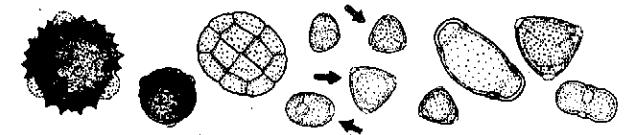
Taraxacum officinale Wigg.
Gewöhnliche Löwenzahn



Pollen aus cubanischem Honig*



Pollen aus kalifornischem Honig*



Pollen aus australischem Honig*